

Appendix A: Resources

National Agencies and Organizations

Advisory Council on Historic Preservation

Description

The Advisory Council on Historic Preservation (ACHP) is an independent Federal agency that promotes the preservation, enhancement, and productive use of our Nation's historic resources, and advises the President and Congress on national historic preservation policy. The ACHP is guided by the 1966 National Historic Preservation Act and is the only entity with the legal responsibility to encourage Federal agencies to factor historic preservation into Federal project requirements.

ACHP's 20 statutorily designated members, including the Chairman who heads the agency, address policy issues, direct program initiatives, and make recommendations regarding historic preservation to the President, Congress, and heads of other Federal agencies.

Contact Information

Advisory Council on Historic Preservation

1100 Pennsylvania Avenue, NW, Suite 809
Old Post Office Building
Washington, DC 20004
202-606-8503
achp@achp.gov
www.achp.gov



View from the Grandview Avenue National Scenic Byway.

National Scenic Byways Program

Description

Established in 1991, the Federal Highway Administration's National Scenic Byways Program promotes the recognition and enjoyment of America's memorable roads. The National Scenic Byways (NSB) Program was established under the Intermodal Surface Transportation Efficiency Act of 1991. Under the program, the U.S. Secretary of Transportation recognizes certain roads as National Scenic Byways or All-American Roads based on their archaeological, cultural, historic, natural, recreational, and scenic qualities. There are 126 such designated byways in 44 states. The Federal Highway Administration promotes the collection as America's Byways.

Contact Information

State Byway Coordinator

Jackie Koons-Felion
State Scenic Byways Coordinator
Pennsylvania Department of Transportation
400 North Street, 6th Floor
P.O. Box 3365
Harrisburg, PA 17105-3365
717-787-0782
Fax: 717-787-5247
jfelion@state.pa.us

Byway Leader

Donna R Holdorf
Executive Director
National Road Heritage Corridor
65 West Main Street, 2nd Floor
Uniontown, PA 15401-3325
724-437-9877
Fax: 724-437-6550
donna@nationalroadpa.org
<http://www.bywaysonline.org/>

America's Byways® Resource Center

The America's Byways® Resource Center, established in 1999, is a joint venture of the Federal Highway Administration and the Arrowhead Regional Development Commission.

Appendix A: Resources (continued)

America's Byways Resource Center

Michelle Johnson, Director
227 West First Street, Suite #610
Duluth, MN 55802
218-625-3305
800-429-9297, option 5
Fax: 218-625-3333
mjohnson@byways.org

Byways Resource Specialist for Pennsylvania

Susan Koschak
America's Byways Resource Center
227 West First Street, Suite 610
Duluth, MN 55802
218-625-3307
800-429-9297 option 5
Fax: 218-625-3333
skoschak@byways.org



The Highland Building (1909) is listed on the National Register but is not a city landmark.

National Park Service

Description

The role of the National Park Service in terms of Historic Preservation is to be sure that America's cultural resources are carefully identified, evaluated, documented, registered, preserved, and interpreted. The National Park Service and its programs are overseen by the U.S. Department of the Interior.

The NPS administers a number of federal historic preservation funding programs. National Register properties (Listed and Eligible) or qualifying local historic districts which are income producing are eligible to receive rehabilitation investment tax credits (RITC). These tax credits are administered by the National Park Service in partnership with State Historic Preservation Offices and the IRS.

The National Park Service also has a committee that advises the Department of the Interior on the administration of RITC funds.

The National Park Service also provides information and educational opportunities on its website and through its many offices throughout the country.

Contact Information

National Park Service Headquarters

National Park Service
1849 C Street NW
Washington, DC 20240
202-208-6843
<http://www.cr.nps.gov/>

National Park Service- Northeast Region

National Park Service
U.S. Custom House
200 Chestnut St., Fifth Floor
Philadelphia, PA 19106
215-597-7013

Appendix A: Resources (continued)

National Trust for Historic Preservation

Description

Founded by a 1949 Congressional action, the National Trust for Historic Preservation was created to facilitate the public participation in historic preservation of buildings, objects, and cultural artifacts relevant to the character of the United States. The National Trust supplies information on techniques and methods that have assisted many groups locally organized to cope with crises in preservation.

Through its Congressional charter and its location in Washington, it has been in position to serve as a link between the activities of the National Park Service and many private groups. Staff at the Washington, D.C., headquarters, six regional offices and 28 historic sites work with the Trust's 270,000 members and thousands of preservation groups in all 50 states.

The National Trust also maintains the National Main Street Center, which offers a clearinghouse of information, technical assistance, research, and advocacy to help leaders revitalize their downtowns and neighborhood commercial districts.

Contact Information

National Trust for Historic Preservation

1785 Massachusetts Avenue, NW
Washington, DC 20036-2117
202-588-6000 or 800-944-6847
Fax: 202-588-6038
<http://www.nationaltrust.org>

National Main Street Center of the National Trust for Historic Preservation

1785 Massachusetts Avenue, N.W.
Washington, DC 20036
202-588-6219
mainstreet@nthp.org
<http://www.mainstreet.org/>

In addition, the National Trust's Office of Community Revitalization offers a number of financing vehicles for reinvesting in low-income areas: The National Trust Loan Funds, http://www.nationaltrust.org/loan_funds/index.html, and the National Trust Community Investment Corporation, <http://www.nationaltrust.org/ntcicfunds/index.html>.

Preservation Action

Description

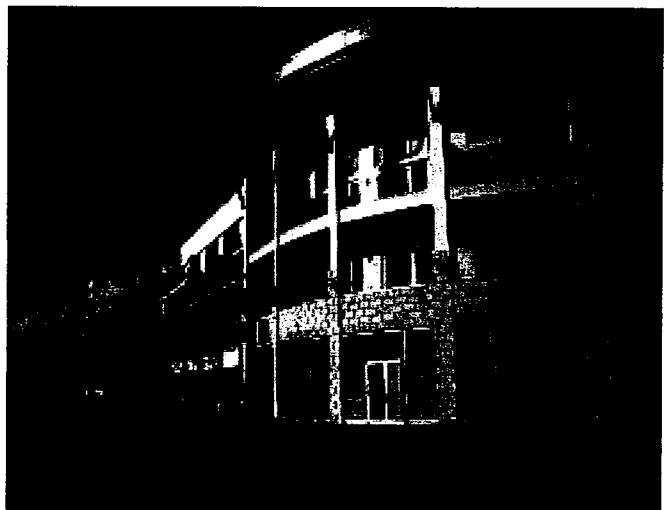
Preservation Action is a national preservation lobbying organization. Preservation Action seeks to make historic preservation a national priority by advocating to all branches of the federal government for sound preservation policy and programs through a grassroots constituency empowered with information and training and through direct contact with elected representatives.

Since 1974, Preservation Action has been and continues to be the preeminent Capitol Hill advocate for national legislation favorable to historic preservation; however, its focus has moved from the need to formulate preservation policy and programs to one of supporting those initiated by legislators.

Contact Information

Preservation Action

401 F Street, NW
Suite 324
Washington, DC 20001
202-637-7873
202-637-7874 fax
mail@preservationaction.org
<http://www.preservationaction.org/>



The success of the new South Side Works is in part a result of the success of the East Carson Street Main Street Historic District.

Appendix A: Resources (continued)

Pennsylvania State Agencies and Organizations

Pennsylvania History and Museum Commission

Description

PHMC is the State Historic Preservation Office (SHPO) which entrusts the administration of all preservation related federal policies in Pennsylvania to them. As the SHPO, PHMC is charged with upkeep of the Pennsylvania's list of National Register properties, nomination of potentially new properties to that National Register list, and administration of federal tax credit programs available to Pennsylvania's Historic Properties. The PHMC also administers numerous preservation grant programs. PHMC issues historic markers which serve to educate, inform, and recognize places and events in Pennsylvania that hold special meaning to the history of the state, locality, or American nation.

Contact Information

State Historic Preservation Office

Ms. Barbara Franco, SHPO
Pennsylvania Historical and Museum Commission
300 North Street
Harrisburg, PA 17120
717-787-2891
<http://www.phmc.state.pa.us/>

Deputy: Ms. Jean Cutler
Bureau for Historic Preservation
Commonwealth Keystone Building
2nd Floor
440 North Street
Harrisburg, PA 17120-0093
717-705-4035
Fax: 717-772-0920
jecutler@state.pa.us

Pennsylvania Downtown Center

Description

The Pennsylvania Downtown Center (PDC) is the only statewide nonprofit organization dedicated solely to the revitalization of the Commonwealth's Core or traditional communities. It provides outreach, technical assistance and educational services primarily utilizing the National Main Street's Four Point Approach to communities interested in the revitalization of their central business districts and surrounding residential neighborhoods. The PDC is also a strong advocate for downtown and neighborhood initiatives in the Commonwealth and is active in many strategic partnerships which promote revitalization and reinvestment in the Commonwealth's "core communities."

Contact Information

Pennsylvania Downtown Center

130 Locust Street
Harrisburg, PA 17101
717-233-4675
Fax: 717-233-4690
padowntown@padowntown.org
<http://www.padowntown.org/>

Preservation Pennsylvania

Description

Preservation Pennsylvania works to protect the Commonwealth's historic resources through creative partnerships, targeted educational and advocacy programs, advisory assistance, and special projects. It assists Pennsylvania communities to protect and utilize the historic resources they want to preserve for the future by holding preservation conferences and workshops, providing technical assistance to members, honors historic preservation achievements with annual awards, and publishes newsletters, handbooks and issue papers.

Contact Information

Preservation Pennsylvania

257 North Street
Harrisburg, PA 17101
717-234-2310
Fax: 717-234-2522
info@preservationpa.org
<http://www.preservationpa.org/>

Appendix A: Resources (continued)

Southwestern Pennsylvania Regional Organizations

Rivers of Steel National Heritage Area

Description:

Created by an Act of Congress and the Commonwealth of Pennsylvania in 1996, the Rivers of Steel National Heritage Area is managed by the non-profit Steel Industry Heritage Corporation (SIHC) in partnership with the National Park Service and the Commonwealth of Pennsylvania. SIHC works with communities throughout the region to identify, conserve, promote and interpret the cultural, historic, recreational and other resources associated with steel and steel-related industries.

The goal of the Rivers of Steel National Heritage Area is to use these resources to encourage community revitalization through cultural tourism, historic preservation, natural and recreational resource conservation, cultural and educational programs and related economic development. Since its inception, Rivers of Steel National Heritage Area has undertaken projects in the region using public and private funds for the National Heritage Area.

Encompassing 3,000 square miles in the seven counties of Allegheny, Armstrong, Beaver, Westmoreland, Greene, Fayette, and Washington, Rivers of Steel is building on southwestern Pennsylvania's remarkable transition from heavy industry to high technology and diversified services as well as bolstering the new regional economy by promoting tourism and economic development based on this region's historic industrial saga.

Contact Information

Steel Industry Heritage Corporation

The Bost Building
623 East 8th Avenue
Homestead, PA 15120
412.464.4020
Fax: 412-464-4417
info@riversofsteel.com
www.riversofsteel.com

Senator John Heinz Pittsburgh Regional History Center

Description

Originally called "Old Residents of Pittsburgh and Western Pennsylvania" the Historical Society of Western Pennsylvania was formed in 1879. Now the region's oldest cultural organization, HSWP operates both the History Center and Meadowcroft Rockshelter and Museum of Rural Life in Avella, Washington County.

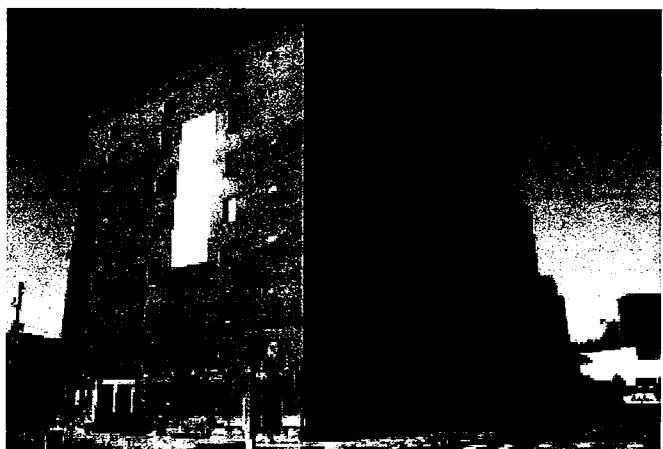
The Senator John Heinz Pittsburgh Regional History Center is a 200,000-square-foot museum and research facility. Located in the city's historic Strip District, its home combines the former Chautauqua Lake Ice Company building with the five-story Smithsonian wing that opened November 13, 2004.

Original artifacts and interactive exhibits will appeal to newcomers, long-time residents, and people of all ages, revealing the fascinating scope and impact of the region's past. The History Center is also a great place to explore family roots -photographs, maps, books, and manuscripts relating to Western Pennsylvania history may be found in its Library & Archives.

Contact Information

Senator John Heinz Pittsburgh Regional History Center

1212 Smallman Street
Pittsburgh, PA 15222
412-454-6000
<http://www.pghhistory.org/>



The former Chautauqua Ice Company is now the History Center.

Appendix A: Resources (continued)

Westsylvania Heritage Corporation

Description

Westsylvania Heritage Corporation (WHC) was formed in the early 1990s as a 501(c)(3) non-profit organization to promote southwestern Pennsylvania's heritage and offer technical assistance. WHC also became a heritage development enterprise incubator, providing support for other small companies and organizations that share the Commission's mission. In addition, Westsylvania formed the Progress Fund in 1996 as a Community Development Financial Institution, providing gap and equity financing to an increasing number of tourism-oriented businesses and for the adaptive reuse of historic buildings.

Contact Information

Westsylvania Heritage Corporation

105 Zee Plaza

Hollidaysburg, Pa 16648

814-696-9380

info@westsylvania.org

<http://www.westsylvania.org/>



The Bost Building is listed on the National Register of Historic Places.



The Homestead Steel Strike of 1892 Memorial Site sits at the heart of the Rivers of Steel National Heritage Area.

Appendix A: Resources (continued)

Pittsburgh Agencies and Organizations

City of Pittsburgh Historic Review Commission

Description

The Historic Review Commission (HRC) protects and maintains historically and architecturally significant buildings and neighborhoods in the City. The HRC is comprised of seven members appointed by the Mayor which must include an architect, a preservationist, a Realtor, a building inspector, and a planner.

When a building is designated as an historic landmark, the Historic Review Commission has jurisdiction over all proposed new construction, demolition, and exterior work to the building. The review process begins only when an owner decides to do work to the exterior of their building.

Contact Information

City of Pittsburgh Historic Review Commission

Department of City Planning

200 Ross Street

Pittsburgh, PA 15219

412-255-2000

http://www.city.pittsburgh.pa.us/cp/html/historic_review_commission.html



Willow Cottage in Shadyside is a City Historic Landmark . . .

Community Design Center of Pittsburgh

Description

The Community Design Center of Pittsburgh (CDCP) is a non-profit organization, governed by a volunteer Board of Directors, composed of neighborhood representatives, architects, landscape architects, and others with community development experience. All CDCP initiatives are undertaken by a professional staff, drawing upon dedicated volunteers, consultants, and collaboration with other organizations.

The CDCP sponsors the Renovation Information Network (RIN), which matches City of Pittsburgh homeowners planning renovations with volunteer architects and intern-architects for low-cost (\$50 or less based on household income) one-on-one consultations, to help get their renovation planning off on the right foot. The CDCP also hosts an annual "Pedal Pittsburgh" bike tour event of city neighborhoods, and offers other technical assistance.

Contact Information

Community Design Center of Pittsburgh

The Bruno Building

945 Liberty Avenue - Loft #2

Pittsburgh, PA 15222

412-391-4144

Fax: 412-391-1282

info@cdcp.org

<http://www.cdcp.org>



. . . but the McCook Mansion, just down the street, is not.

Appendix A: Resources (continued)

Preservation Pittsburgh

Description:

Preservation Pittsburgh is a non-profit advocacy group dedicated to preserving our region's historic, architectural, cultural, and environmental heritage. Its purpose is to assist individuals and organizations in preserving the integrity of the architecture and physical surroundings they value. Preservation Pittsburgh's primary goal is to promote the importance of preservation issues in the deliberations and decisions of public officials, private groups, developers and the general public.

Contact Information

Preservation Pittsburgh

201 S. Winebiddle Street
Pittsburgh, PA 15224
<http://www.pittsburghheritage.com/>

Pittsburgh History and Landmarks Foundation

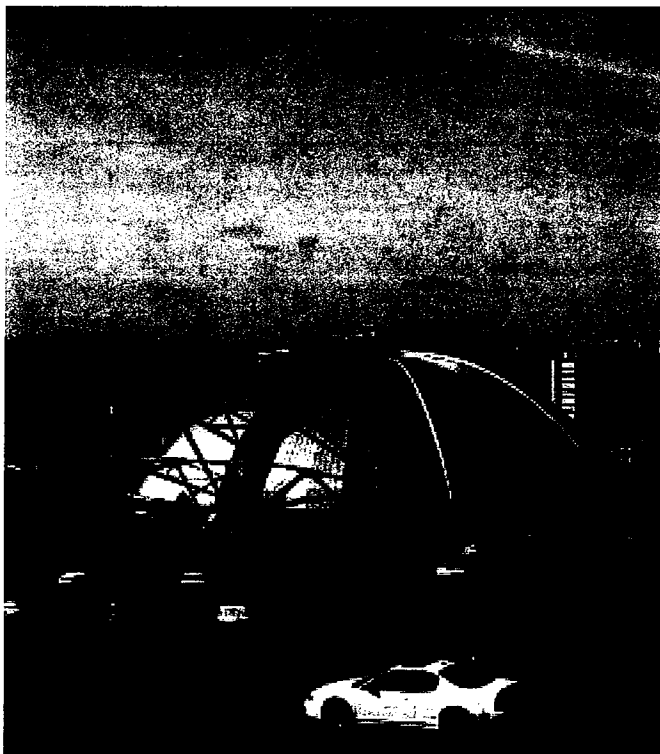
Description

Founded in 1964 as a nonprofit historic preservation group serving Allegheny County, PHLF is dedicated to identifying and preserving the architectural landmarks, historic neighborhoods, and historic designed landscapes of Allegheny County and educating people about this region's architectural heritage and urban landscape design history. PHLF offers loans through its Preservation Loan Fund, technical services, bricks-and-mortar projects, architectural surveys, feasibility studies, tours & events, and educational programs.

Contact Information

Pittsburgh History & Landmarks Foundation

100 West Station Square Drive, Suite 450
Pittsburgh, PA 15219
412-471-5808
Fax: 412-471-1633
<http://www.phlf.org>



Preservation Pittsburgh nominated the Civic Arena to be a city landmark.



PHLF has helped restore houses on Pittsburgh's North Side.

I-80 TOLL CONVERSION TEAM MEETING

**AUGUST 7, 2008
PTC EXECUTIVE BOARD ROOM
9:30 AM**

AGENDA

- I. Minutes from June 25, 2008**

- II. Subcommittee Reports**
 - Amended FHWA Phase I Application
 - Legislative
 - Public Relations
 - Engineering
 - Traffic
 - Environmental
 - Economic
 - Maintenance
 - Tolling Systems, Fare Collection and Operations
 - PennDOT Coordination

- III. Recent/Upcoming Events**
 - MPO/RPO Meetings
 - Legislative Briefings
 - Media Webcast

- IV. Next Meeting**