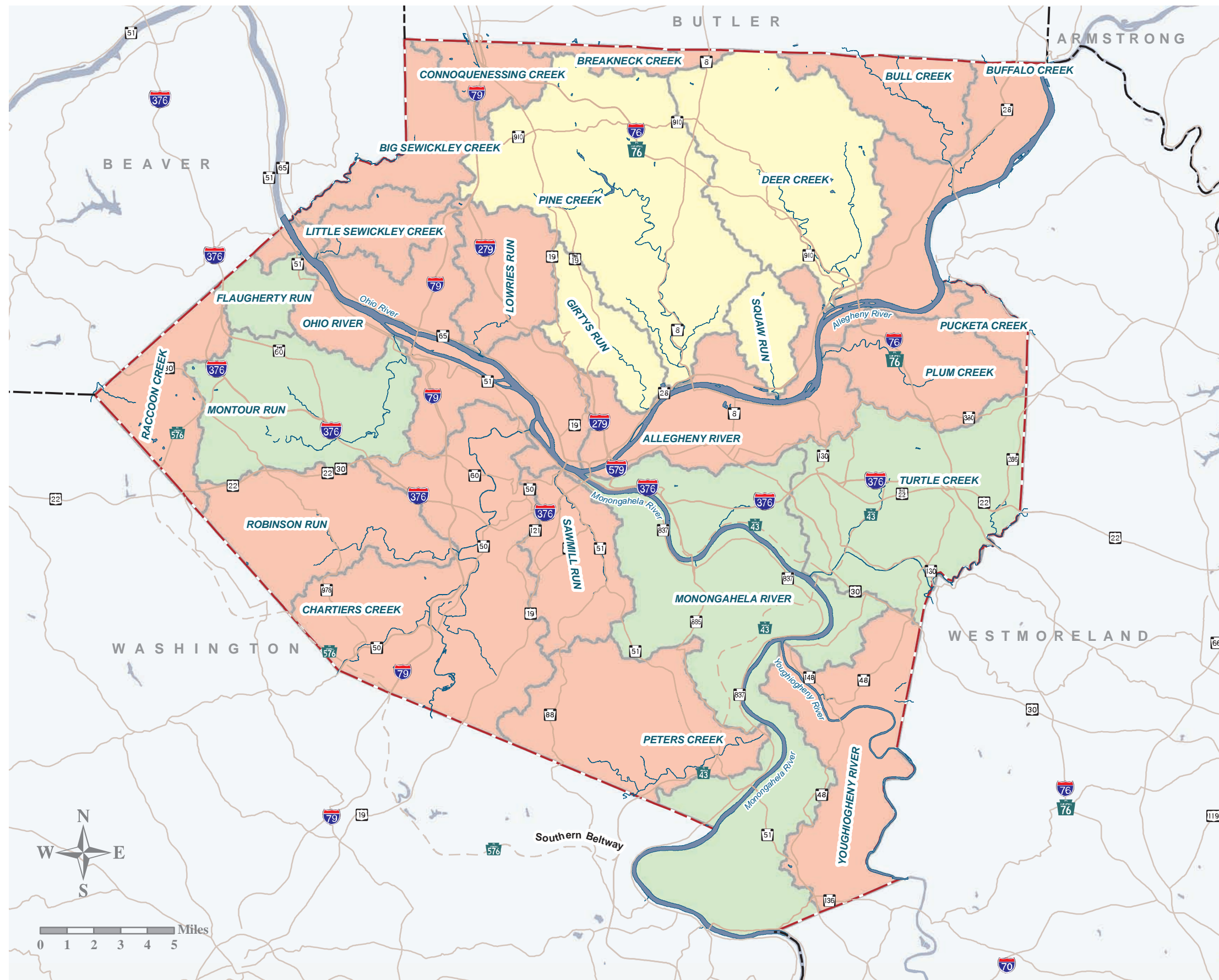


# Pennsylvania Stormwater Management Act 167 Designated Watersheds and Plan Status






## Pennsylvania Stormwater Management Act 167 Designated Watersheds and Plan Status








### LEGEND

#### Act 167 Watersheds in Allegheny County

#### Plan Status

-  Existing Plan - Being Updated
-  Existing Plan - No Update Underway
-  No Plan or Planning Process in Place

#### Base Map

-  Allegheny County
-  Bordering Counties
-  Hydrology
-  Major Roadways
-  Proposed Roads

### DATA SOURCES

Allegheny County  
 Pennsylvania Department of Transportation  
 Pennsylvania Turnpike Commission  
 National Hydrography Dataset

**May 3, 2008**  
 This map is property of Allegheny County and  
 should be used for reference purposes only.

This map was prepared for:  
 Dan Onorato, Allegheny County Chief Executive  
 Allegheny County Economic Development - Planning Division

