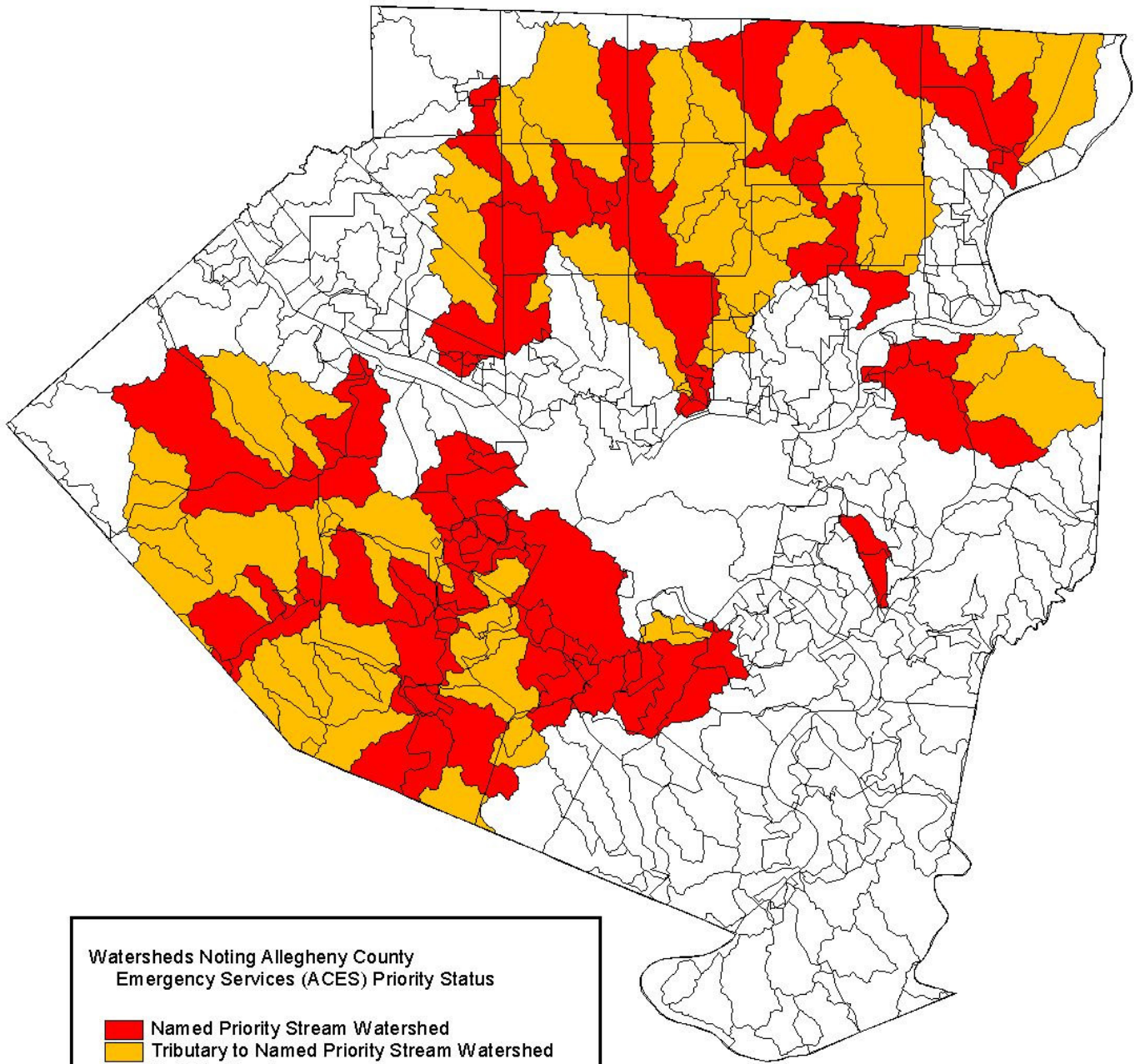


The Allegheny County Emergency Service Department provided a listing of designated priority streams relative to flooding in Allegheny County. The identification of these watersheds was based on a history of flash flooding and resultant damages. The listed priority streams are:

- Bull Creek
- Chartiers Creek
- Deer Creek
- Lowries Run
- McLaughlin Run
- Montour Run
- Pine Creek
- Plum Creek
- Rawlins Run
- Robinson Run
- Sawmill Run
- Streets Run

A GIS shapefile was developed based upon this information using watershed boundary GIS data obtained from the PASDA website. The shapefile contains all of the watersheds in the County and notes watersheds for streams specifically listed by Emergency Services as well as watersheds that are tributary to the specifically listed streams. Since flows from the tributary streams reach the listed priority streams, they also should be considered as priority stormwater watersheds. This information is illustrated in the attached graphic.

# Allegheny County Watersheds Identifying Flooding Priority Stream Watersheds



## Watersheds Noting Allegheny County Emergency Services (ACES) Priority Status

- Named Priority Stream Watershed
- Tributary to Named Priority Stream Watershed
- Not Prioritized

Sources:  
Watershed boundaries: Environmental Resources Research Institute  
via PASDA  
Allegheny County Emergency Services Priority Watersheds: Allegheny  
County Emergency Services Department